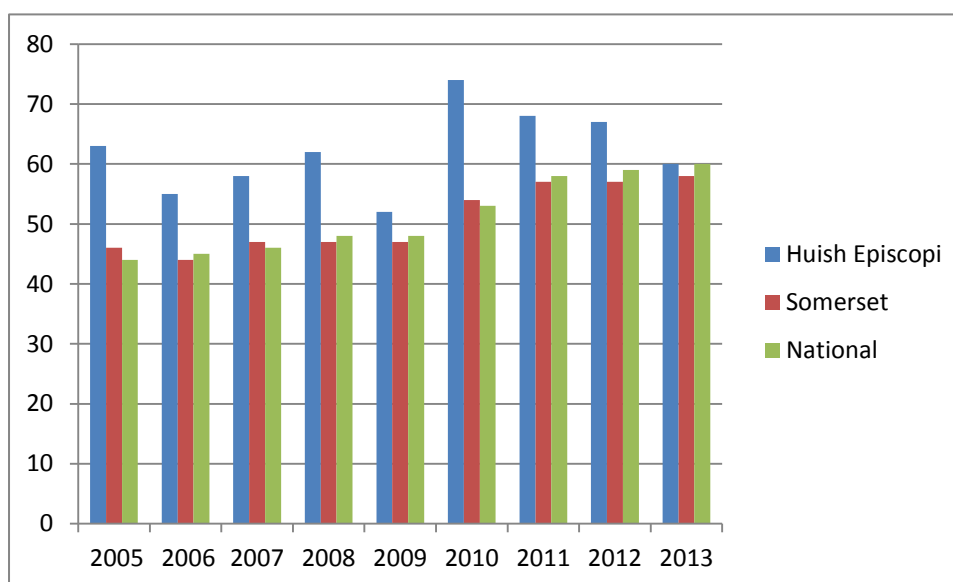


## HUISH EPISCOPI GCSE RESULTS 2013 (Compared with the National Average)

### GCSE 2005 - 2013

Percentage 5+ A* - C (including Eng/Maths)	2005	2006	2007	2008	2009	2010	2011	2012	2013
Huish Episcopi	63	55	58	62	52	74	68	67	60
Somerset average	46	44	47	47	47	54	57	57	58
National average	44	45	46	48	48	53	58	59	60



### ENGLISH BACCALAUREATE

The English Baccalaureate was introduced as a performance measure in the 2010 performance tables. It is not a qualification in itself. The measure recognises where pupils have secured a C grade or better across a core of academic subjects – English, mathematics, history or geography, the sciences and a language. The following table shows the percentage of students achieving this measure over the last four years.

Percentage E Bacc	2010	2011	2012	2013
Huish Episcopi	32	30	21	34
Somerset average	14	14	14	21
National average	15	15	18	NYA

**GCSE RESULTS 2013**  
(shown as percentages)

Subject	Entries	A*	A	B	C	D	E	F	G	U	X	A*-A	A*-C	A*-G
Hospitality & Catering	5	20	40	0	0	40	0	0	0	0	0	60	60	100
Biology	68	19.1	36.8	30.9	11.8	1.5	0	0	0	0	0	55.9	98.5	100
Chemistry	68	35.3	29.4	29.4	5.9	0	0	0	0	0	0	64.7	100	100
Physics	68	22.1	32.4	33.8	8.8	1.5	1.5	0	0	0	0	54.5	97.1	100
Science Single Award	189	0	2.6	21.7	33.3	24.3	11.1	5.8	0.5	1.1	0	2.6	57.6	99.3
Science: Additional	185	0	4.3	13.5	27.6	26.5	13	7.6	5.9	1.6	0	4.3	45.4	98.4
Mathematics	261	9.2	17.3	27.7	22.6	10.8	3.5	5.8	2.3	0.8	0.4	26.5	76.6	98.9
Statistics	90	4.4	24.4	34.4	30	5.6	0	0	0	1.1	0	28.8	93.3	98.9
Information Technology	115	5.2	16.5	24.3	35.7	6.1	6.1	3.5	0	2.6	0	21.7	81.7	97.4
Business Studies	45	4.4	8.9	15.6	26.7	13.3	11.1	6.7	4.4	8.9	0	13.3	55.6	91.1
Child Devt	20	5	20	35	25	5	10	0	0	0	0	25	85	100
Art & Design	111	24.3	10.8	33.3	17.1	6.3	4.5	3.6	0	0	0	35.1	85.6	100
Art and Design Textiles	19	0	21.1	10.5	5.3	21.1	10.5	26.3	0	5.3	0	21.1	36.8	94.7
Geography	125	12	26.4	20	15.2	13.6	7.2	3.2	2.4	0	0	38.4	73.6	100
History	119	8.4	24.4	15.1	16.8	14.3	13.4	7.6	0	0	0	32.8	64.7	100
RE short course	240	0.8	8.8	13.3	24.6	12.5	16.3	10.4	5.8	7.5	0	9.6	47.5	92.5
English	10	0	0	0	0	20	60	10	0	10	0	0	0	90
English Language	248	6.1	15	26.7	20.2	24.3	6.5	2	0	0	0	21.1	67.7	100
English Literature	247	10.9	19.4	25.1	18.6	15.8	4.9	4.5	0.8	0	0	30.3	74.1	100
Drama	25	32	8	28	16	0	12	0	0	0	4	40	84	96
French	101	9.9	13.9	18.8	25.7	14.9	8.9	5	3	0	0	23.8	68.3	100
German	41	4.9	14.6	24.4	19.5	22	12.2	2.4	0	0	0	19.5	63.4	100
Spanish	56	5.4	8.9	21.4	28.6	14.3	10.7	8.9	0	0	1.8	14.3	64.3	98.2
Music	10	30	40	30	0	0	0	0	0	0	0	70	100	100
Catering Studies	23	4.3	17.4	0	34.8	30.4	8.7	4.3	0	0	0	21.7	56.5	100
Resistant Materials	18	0	0	11.1	44.4	27.8	16.7	0	0	0	0	0	55.6	100
D&T Product Design	28	10.7	14.3	25	17.9	21.4	10.7	0	0	0	0	25	67.9	100

NVQ Level 2 (equivalent to B grade)	Entries	Pass
French NVQ	37	100%
German NVQ	11	100%

BTEC 2013	Entries	D*	D	M	P	U	X
Public Services	8	0	0	0	100	0	0
Music Studies	25	28	32	28	8	0	0
Sports Studies	25	36	8	20	36	0	0

## YEAR 13 SUBJECT RESULTS 2013

SUBJECT	Entries	A*	A	B	C	D	E	U	% A*-A	% A*-C	% A* - E
Health & Social Care	7	0	0	2	1	2	2	0	0	43	100
Information Technology	2	0	0	1	0	0	1	0	0	50	100
Biology	18	0	3	3	7	5	0	0	17	72	100
Chemistry	13	0	3	3	2	5	0	0	23	62	100
Physics	9	0	2	1	1	1	3	1	22	44	89
Mathematics	14	1	4	4	2	2	1	0	36	79	100
Business Studies	6	0	0	4	1	1	0	0	0	83	100
Art & Design	8	2	0	2	3	1	0	0	25	88	100
Art and Design Textiles	3	0	2	0	1	0	0	0	67	100	100
Fine Art	1	1	0	0	0	0	0	0	100	100	100
Geography	3	0	0	2	1	0	0	0	0	67	100
History	7	1	0	2	1	2	1	0	14	43	100
Psychology	15	0	2	6	4	1	1	0	13	87	100
Sociology	9	0	0	2	6	0	1	0	0	89	100
English Language	9	0	0	3	2	3	1	0	0	56	100
English Literature	3	0	1	0	1	1	0	0	33	67	100
Media Film and TV Studies	4	1	1	1	1	0	0	0	50	100	100
French	1	0	1	0	0	0	0	0	100	100	100
German	2	0	1	1	0	0	0	0	50	100	100
Spanish	2	0	1	0	1	0	0	0	50	100	100
Music Technology	2	0	0	0	2	0	0	0	0	100	100
D&T Product Design	5	0	0	1	3	1	0	0	0	20	100
<b>Total</b>	<b>143</b>	<b>6</b>	<b>21</b>	<b>38</b>	<b>40</b>	<b>25</b>	<b>11</b>	<b>1</b>	<b>19</b>	<b>73</b>	<b>99</b>

These results do not show levels of progress from GCSE results. An analysis of levels of progress shows that all subjects performed in line with National expectations.

### PROGRESS IN ENGLISH AND MATHEMATICS

The Government expects the majority of pupils to make at least expected progress in English and, separately, in Mathematics between the end of KS2 and the end of KS4. The expected progress is at least three levels. The measure of expected progress is built on the principle that pupils achieving a level 4 in English or in Mathematics by the end of KS2 should be expected to achieve at least a C grade GCSE in that subject.

The table below shows the percentage of pupils who, by the end of KS4, have made expected progress. Pupils who did not do the KS2 tests and therefore do not have a KS2 level are not included in this data. This data is only available for the last five years.

Percentage Expected progress English	2009	2010	2011	2012	2013
Huish Episcopi	70	87	88	79	65
Somerset average	65	71	73	65	68
National average	66	70	72	68	70

Percentage Expected progress Mathematics	2009	2010	2011	2012	2013
Huish Episcopi	65	80	70	69	76
Somerset average	60	63	62	66	71
National average	59	63	65	69	71