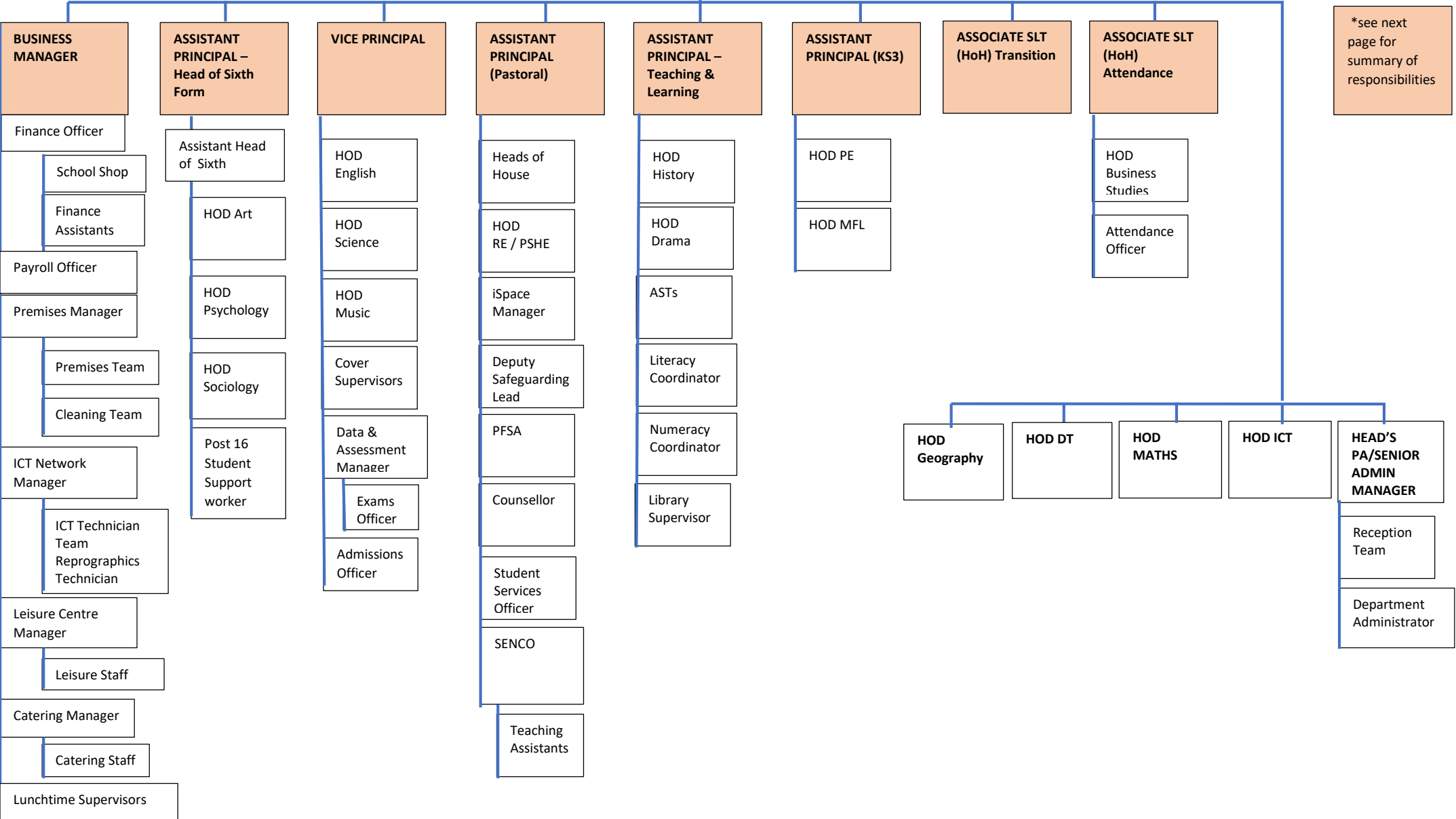


BOARD OF DIRECTORS
 Strategy Development and Whole School monitoring

PRINCIPAL
 Visions and Values and strategic development
 Quality of Teaching and Learning
 Whole School Performance
 School Improvement Plan
 Parent Forum
 Whole School SEF
 Teaching Staff HR
 Ofsted

All members of SLT have curriculum, pastoral, line management and governance responsibilities

*see next page for summary of responsibilities



BUSINESS MANAGER
Finance
Premises
Support Staff HR
Health and Safety
Educational Visits
Leisure Centre
Catering
Staff wellbeing
School transport
Data Protection Lead

ASSISTANT PRINCIPAL – Head of Sixth Form
Quality of teaching, learning & assessment for post 16
Progress & achievement Post 16
Retention, recruitment, transition (KS4 - KS5)
Post 16 Pastoral care and safeguarding
Post 16 Ofsted preparations
Post 16 Financial management
Post 16 PSHE
Equality, Diversity and Inclusion
Sixth Form AIP
Sixth Form enrichment/progression
Sixth Form curriculum development

VICE PRINCIPAL
KS4 achievement & progress
Liaise with AHT (KS3) data & progress
Intervention
Middle leaders
Curriculum 11-19
Timetable / staff requirements
Data management, exams & SIMS
DIPs
PiXL
Formal complaints

ASSISTANT PRINCIPAL (Pastoral)
House System (KS3-5)
Prefects and School Council
Safeguarding – DSL
Multi-agency work
Behaviour, rewards & sanctions
iSpace and SSB
Pastoral Staff and Structures
Staff duties Whole school
SMSC / FBV / PSHE
Modified curriculum pathways

ASSISTANT PRINCIPAL – Teaching & Learning
Staff CPD
QA schedule and teaching standards, assessment and feedback
Blue sky
Homework
Literacy and Numeracy
Academy Leadership Programme
Research in learning
Leadership of T&L group
Public and major events
PIXL
Staff Induction/Exit
GTP Training and NQTs
Parent and Staff Voice
Student Council

ASSISTANT PRINCIPAL (KS3)
KS3 curriculum assessment and progress
E-learning/google classroom
CEIAG/work experience/work related learning (KS3-5)
Pupil Premium strategy & outcomes
ICT Infrastructure
Alumni
School calendar
Website
Communications and marketing
Open evenings
Lead learners
International dimensions
Whole school enrichment & curricular activities

ASSOCIATE SLT (SENCO)
Liaison with external services (EP, SEND, SSPS, CAMHS)
QA for SEND teaching.

ASSOCIATE SLT (HoH) Transition
Liaison with primary schools and primary transition
Deputy DSL

ASSOCIATE SLT (HoH) Attendance
Whole School strategy for attendance
Liaison with Head of Sixth on attendance